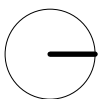


UNIT F - 2 bedroom

KEY PLAN



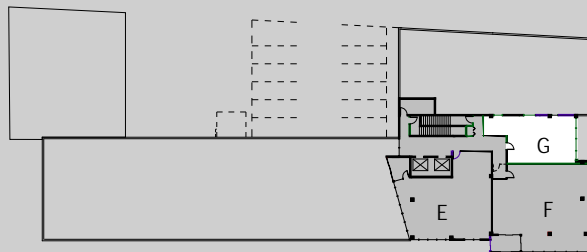
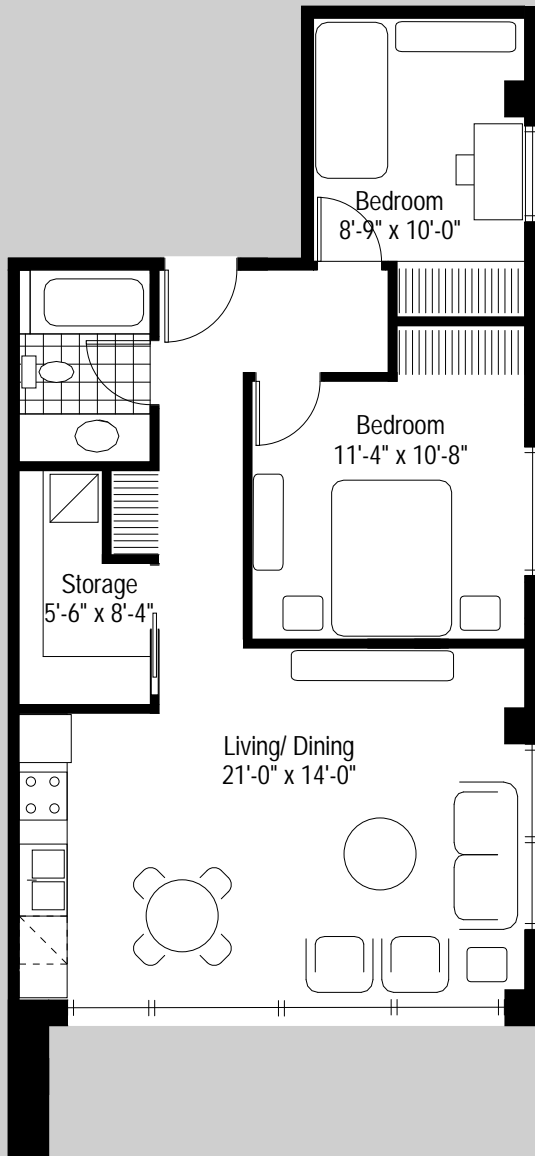
226 Osborne North - Phase II Development

Winnipeg, Manitoba



COHLMAYER
ARCHITECTURE
LIMITED

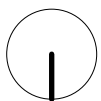
TOTAL: 1,653 square feet



UNIT G - 2 bedrooms

KEY PLAN

TOTAL: 750 square feet

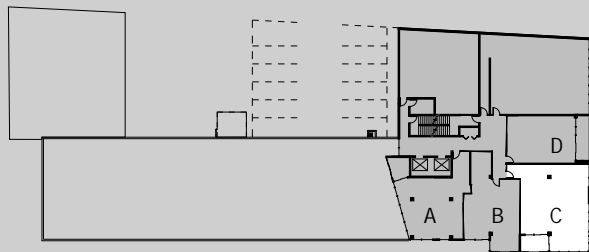
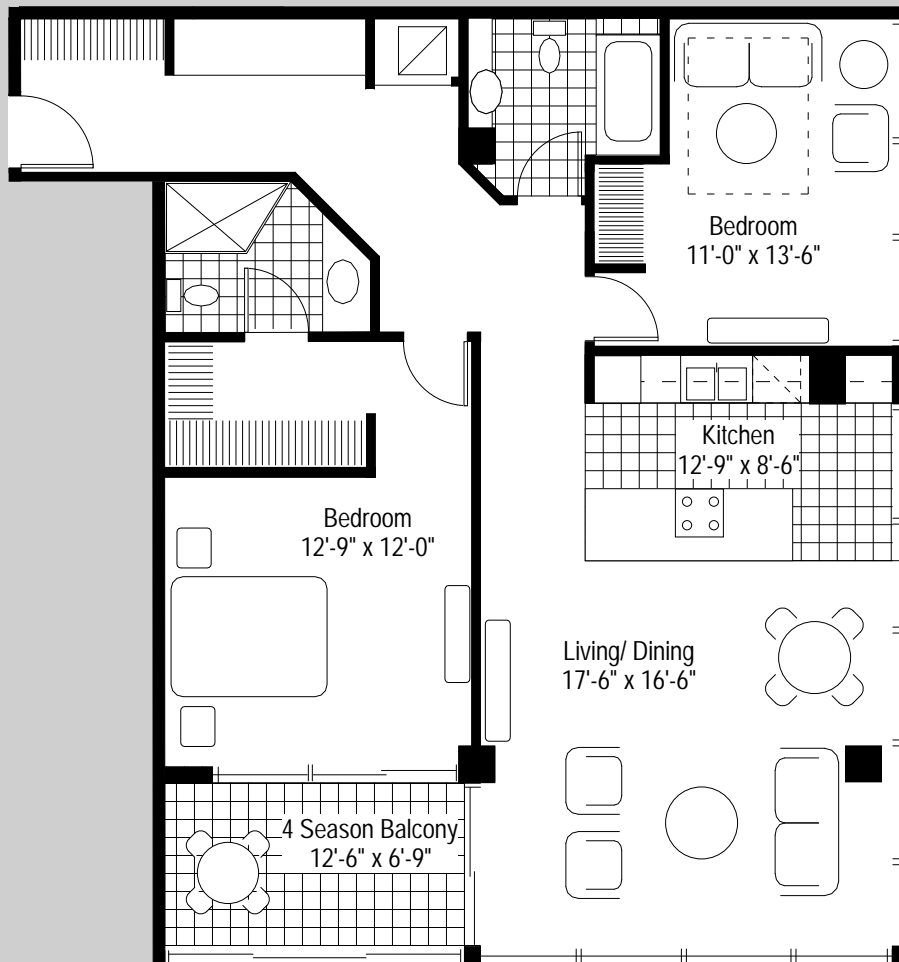


226 Osborne North - Phase II Development

Winnipeg, Manitoba

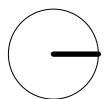


COHLMeyer
ARCHITECTURE
LIMITED



UNIT C - 2 bedroom

➔ KEY PLAN



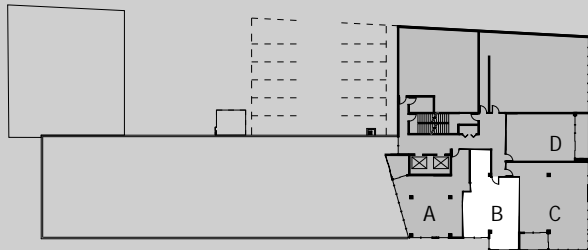
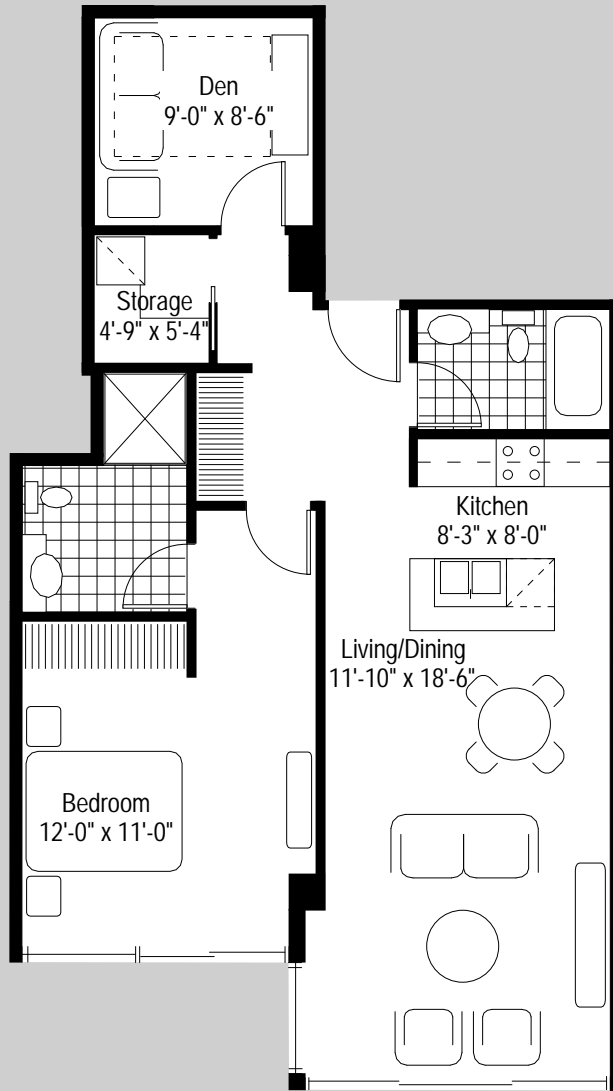
226 Osborne North - Phase II Development

Winnipeg, Manitoba



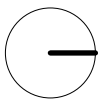
**COHLMAYER
ARCHITECTURE
LIMITED**

TOTAL: 1,253 square feet



UNIT B - 1 bedroom + den

KEY PLAN



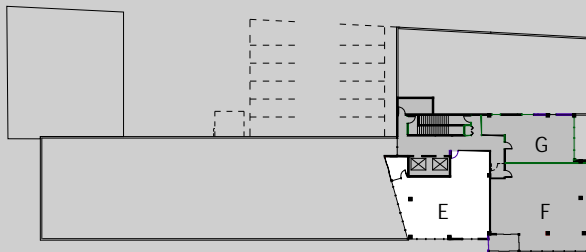
226 Osborne North - Phase II Development

Winnipeg, Manitoba



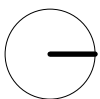
COHLMAYER
ARCHITECTURE
LIMITED

TOTAL: 835 square feet



UNIT E - 2 bedroom

KEY PLAN



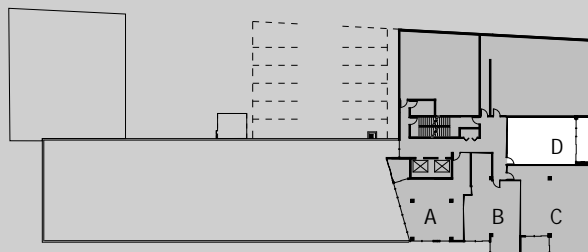
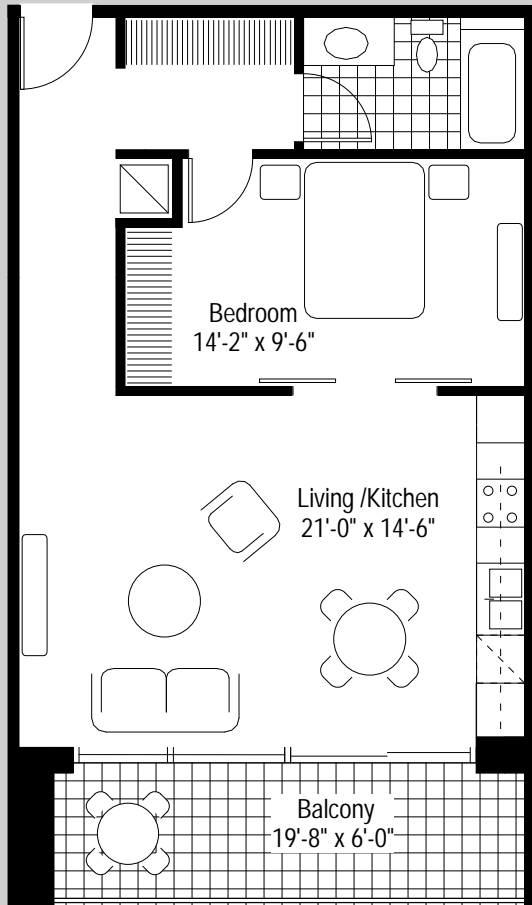
226 Osborne North - Phase II Development

Winnipeg, Manitoba



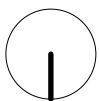
COHLMAYER
ARCHITECTURE
LIMITED

TOTAL: 1,410 square feet



KEY PLAN

UNIT D - 1 bedroom



226 Osborne North - Phase II Development

Winnipeg, Manitoba

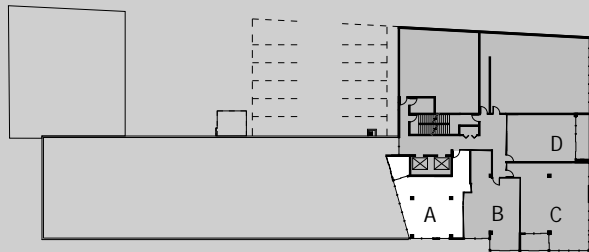
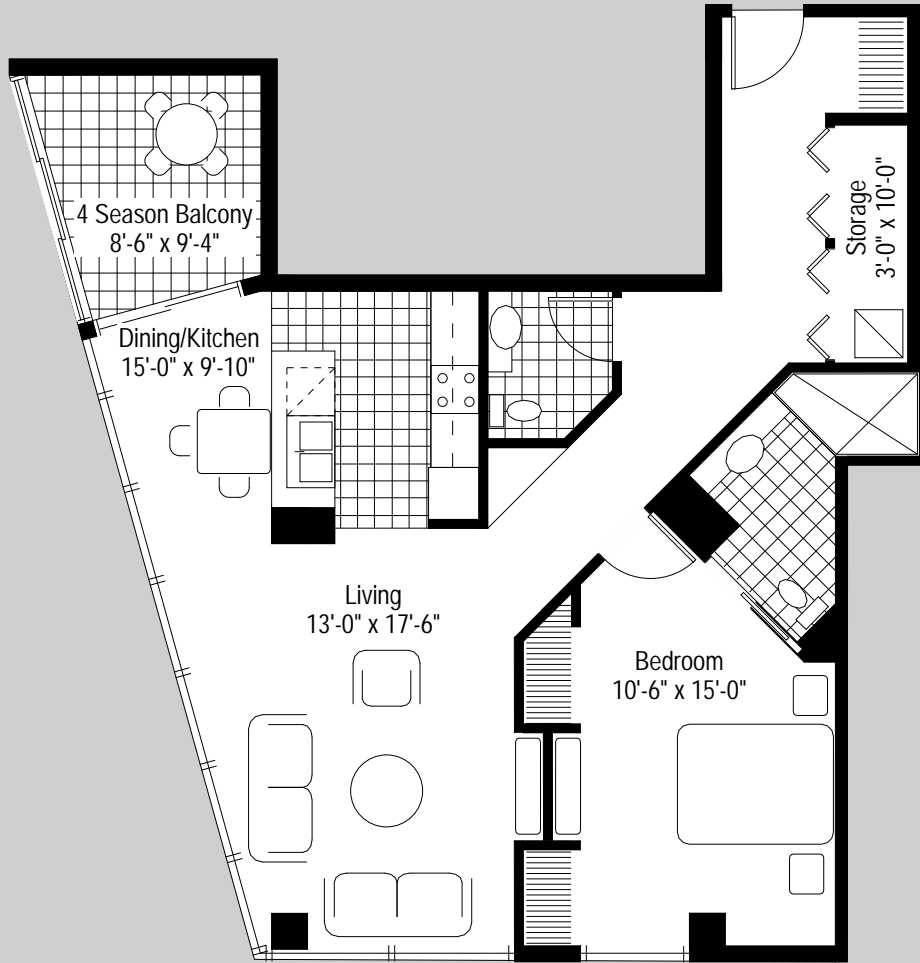


COHLMAYER
ARCHITECTURE
LIMITED

TOTAL: 790 square feet

living: 665 square feet

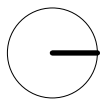
balcony: 125 square feet



UNIT A - 1 bedroom

➔ KEY PLAN

TOTAL: 965 square feet

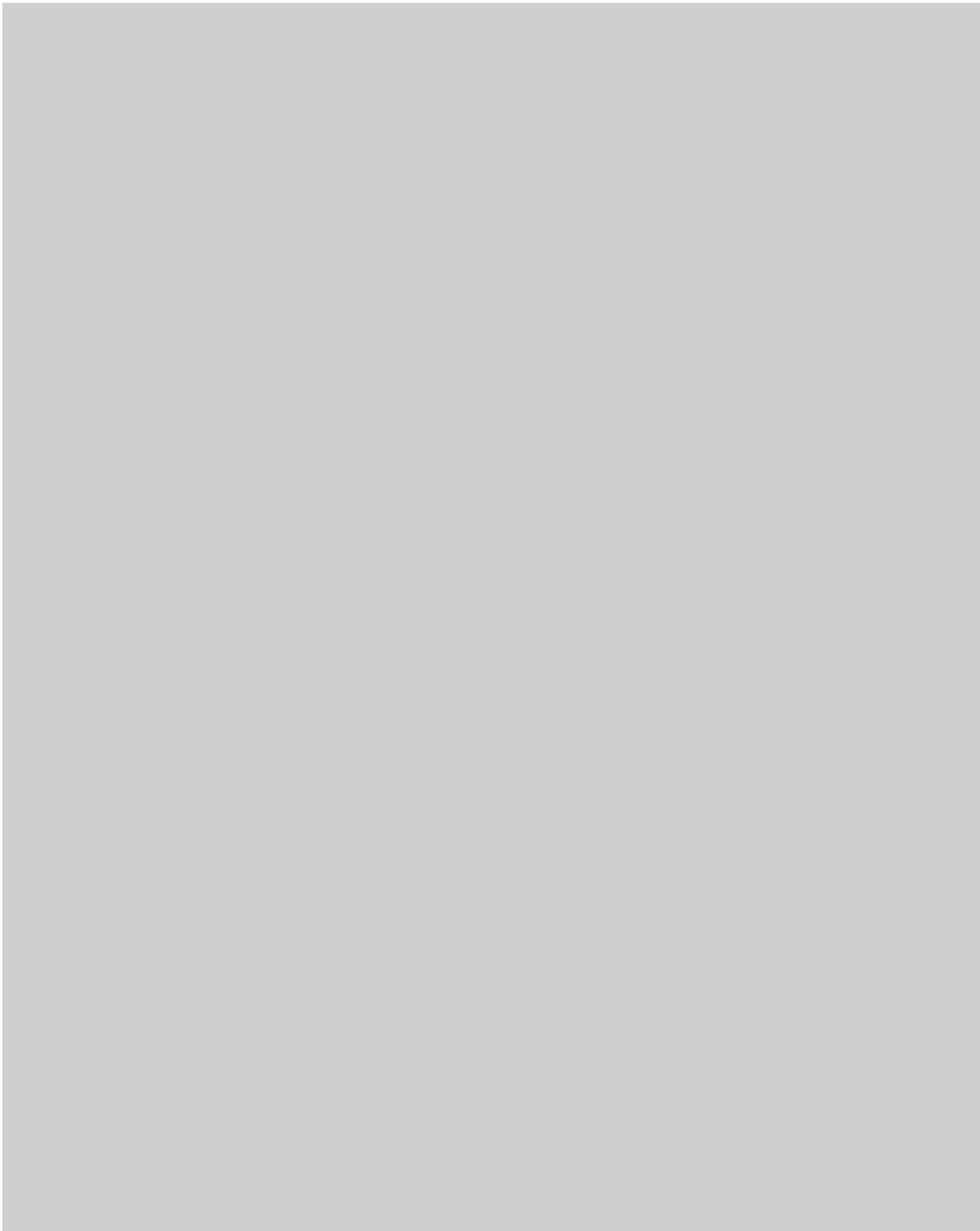


226 Osborne North - Phase II Development

Winnipeg, Manitoba



COHLMAYER
ARCHITECTURE
LIMITED



226 Osborne North - Phase II Development

Winnipeg, Manitoba



COHLMAYER
ARCHITECTURE
LIMITED